

MONTHLY MEMBERSHIP PROGRESS REPORT

District 321A3

Results as of: 5/31/2026

GMT:

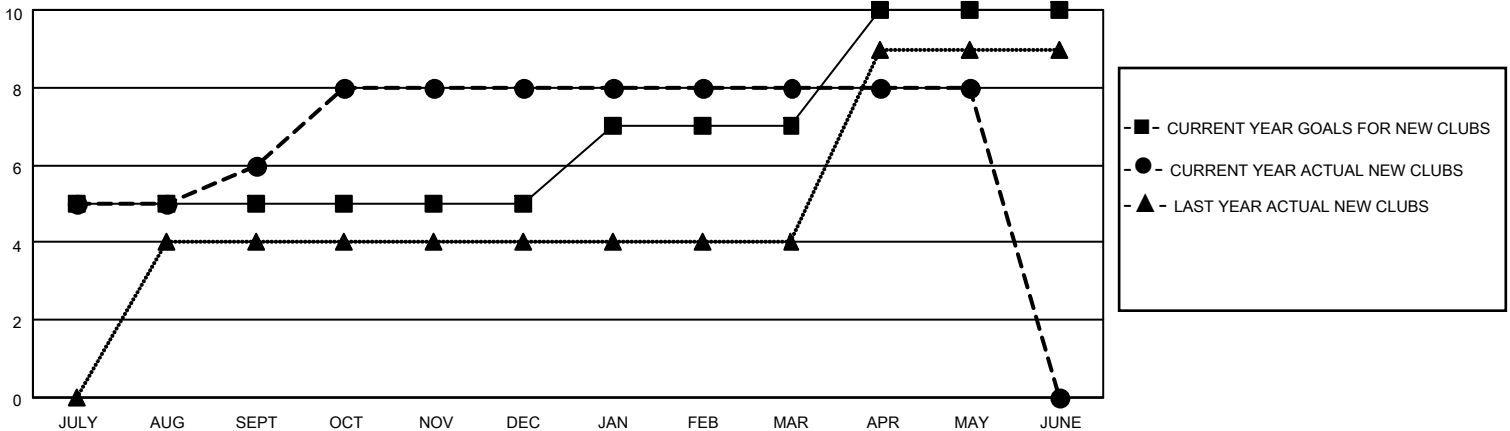
LOCATION INDIA

GMT CA

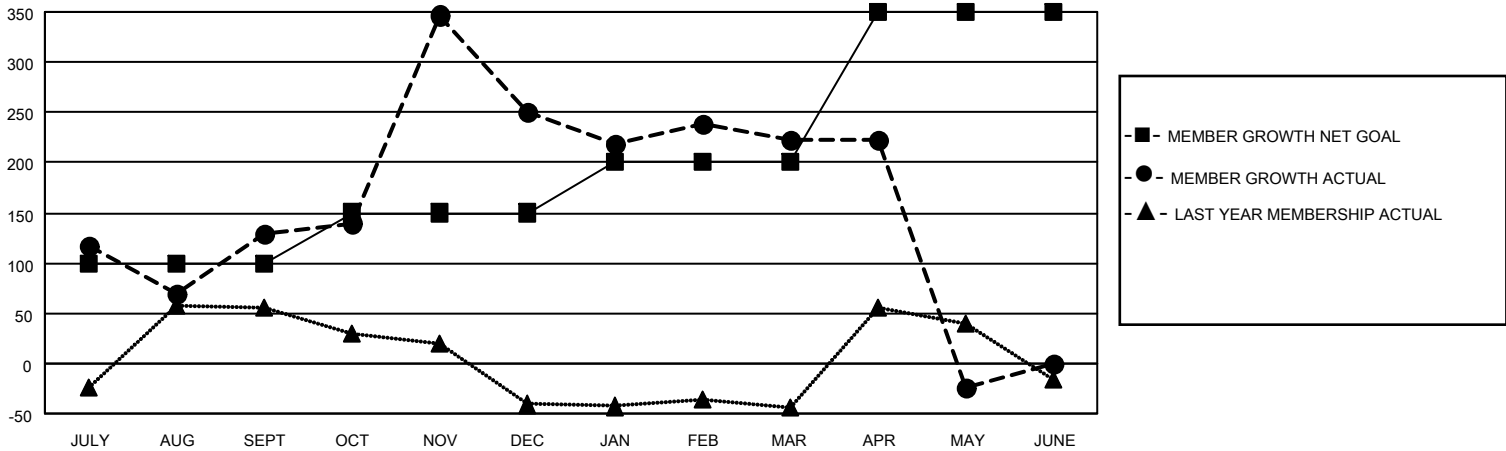
Clubs			
RESULTS FOR 2025-2026			
QUARTER	NEW CLUB GOAL	NEW CLUBS	DROPPED CLUBS
JULY/AUG/SEPT	5	6	0
OCT/NOV/DEC	0	2	5
JAN/FEB/MAR	2	0	1
APR/MAY/JUNE	3	0	2

Members			
RESULTS FOR 2025-2026			
QUARTER	MEMBER GROWTH NET GOAL	MEMBER GROWTH ACTUAL	DROPPED MEMBERS ACTUAL (including transfers)
JULY/AUG/SEPT	100	367	157
OCT/NOV/DEC	50	419	273
JAN/FEB/MAR	50	127	88
APR/MAY/JUNE	150	88	273

GOALS AND ACTUAL NEW CLUBS CUMULATIVE



GOALS AND ACTUAL MEMBERS CUMULATIVE



DROPPED CLUBS: 8	96 CLUBS OF 137 ADDED 1 OR MORE NEW MEMBERS	GENDER DISTRIBUTION	
		MALE 2,001 (79.31%)	FEMALE 521 (20.65%)
DROPPED MEMBERS		CLICK HERE FOR CUMULATIVE MEMBERSHIP DATA	TOTAL FAMILY UNIT MEMBERS 806
DECEASED 9	CLUB CANCELLED 338		FAMILY MEMBERS PAYING HALF DUES 483
OTHER 442	TOTAL 789		